



W₂A

Water₂Adapt

*Resilience enhancement
and water demand management
for climate change adaptation*

1st INTERMEDIATE OBJECTIVE

September - December 2010

Objective 1.4: Synthesis report

Fondazione Eni Enrico Mattei (FEEM)

Water2Adapt: Resilience enhancement and water demand management for Climate Change Adaptation

ERA-net funding initiative, 2nd Joint Call for Research on IWRM

Participating countries/institutions

Fondazione Eni Enrico Mattei (FEEM), Italy [Coordinator]; Seeconsult Deutschland GmbH, Germany; Basque Centre for Climate Change (BC3), Spain; Chamber of Agriculture of Lower Saxony (CALS), Germany; Fundação da Faculdade de Ciências e Tecnologia, Universidade Nova de Lisboa (CENSE), Portugal

Web Link: www.feem-project.it/water2adapt

Contact

Scientific coordination: Jaroslav Mysiak(FEEM)

Project management: Martina Gambaro (FEEM)

Phone: +39 0412711455, e-mail: w2a@feem.it

Table of Contents

PROJECT INTRODUCTION AND OBJECTIVES.....	4
General objectives.....	4
Objectives of the first reporting period.....	4
INTERMEDIATE OBJECTIVES	6
1.1: Production of the Inception report and dissemination strategy.....	6
1.2: Project management structure.....	6
1.3: Overarching framework for resilience	8
1.4: Synthesis report for ISPRA.....	8
ANNEXES.....	9
Annex 1: Inception Report and Dissemination strategy.....	9
Annex 2: Dissemination material.....	9
Annex 3: The Water2Adapt team	9
Annex 4: Minutes	9
Annex 5: Overarching framework for resilience	9

PROJECT INTRODUCTION AND OBJECTIVES

Water2Adapt is an applied-research project, which seeks to produce policy-relevant knowledge and recommendations for water management and the implementation of the EU Water Framework Directive. In particular, the project sets to contribute to the economic analysis of water uses, efforts to set up efficient and socially equitable prices for water and water services, and to assess programmes of measures in the river basins. Capacity workshops will be organised in the case study regions to increase awareness of the topics to which this project seeks to contribute.

General objectives

1. To make the concepts of economic and social resilience applicable and operational at river basin scale, both as a practical instrument for water management (Water Framework Directive) and as a tool guiding the climate adaptation efforts
2. To review water demand management options aimed at increasing the economic and social resilience, with particular emphasis on the use of economic instruments
3. To develop a set of practical recommendations for including economic and social resilience in water management and drought preparedness plans

Objectives of the first reporting period

The Water2Adapt project's first reporting period covers the period between September and December 2010 (4 months). According to the contract, the following objectives/phases should have been completed in this phase:

- 1.1 Production of the inception report and dissemination strategy
- 1.2 Set up the project management structure including advisory board, organisation of the kick-off meeting, development of the website and initial dissemination material
- 1.3 Development of the overarching framework for the resilience as used in the Water2Adapt project
- 1.4 Synthesis report (this document)

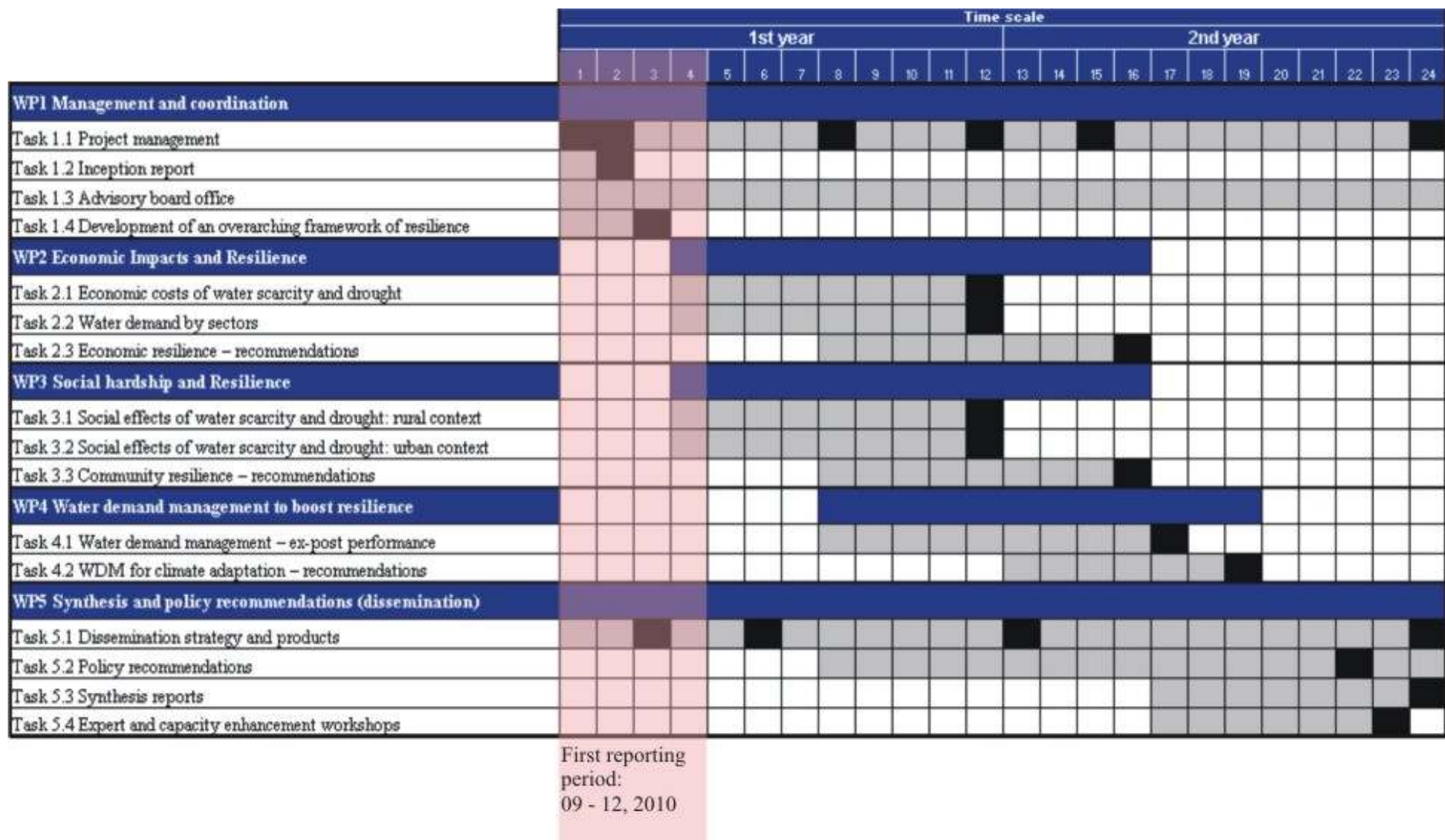


Figure 1 Project's timetable and status (level of completion)

INTERMEDIATE OBJECTIVES

1.1: Production of the Inception report and dissemination strategy

The first deliverables of the project include the del 1.1: Inception Report and the del 1.2 Dissemination Strategy. The Inception Report (IR) (available from the website and in Annex 1) contains the revised Description of Work, activities, commitments and responsibilities of each partner within each workpackage and task. During the Kick-off meeting and thereafter, all tasks have been revised and their description completed. The IR is now being reviewed by the External Advisory Board.

A Dissemination strategy has been produced that comprises of four main dissemination lines: (1) Awareness; (2) Internet communication; (3) Publications; (4) Events and Network (described below). All four lines will address the three main target groups (the academic and scientific community, the policy makers, the general public). The full dissemination strategy is included in Annex 1, inside the Inception Report.

The Co-ordinator (FEEM) has presented the project at national and international meetings, supervised the production of posters and supervised the translation of the website in the partners' local languages. All the efforts made up to now and the envisaged future dissemination activities are detailed in Annex 1 (Inception report and Dissemination strategy) and Annex 2 (Dissemination material) to this report.

1.2: Project management structure

On the onset of the project the **Water2Adapt project management structure** was strengthened and made operational, by better specifying partners' responsibility with respect to each task and within each case study. The complete research team in each partner institution is included in Annex 3 for an updated list.

The Portuguese partner, FFCT-CENSE, has so far not been able to sign the contract the respective funding agency. Therefore, the necessary input to the Inception report and Overarching Framework came in late and without sufficient detail. As a result, the formal agreement with the representative of the Alenteijo River Basin Authority is still to be signed. In case of further delays, the time schedule of the WP2 and WP3 and their main deliverables are at risk. It is expected that the contract will be signed by the end of January the latest.

The Spanish reference river basin has been changed in agreement with the Spanish funding agency. It is no longer the river basin Guadalquivir (Andalucía) but the basin of river Ebro on the border between Basque country and Catalonia.

Advisory Board

The representatives of each River Basin have been contacted and signed letters of intent of collaboration (**Erreur ! Source du renvoi introuvable.**). These letters are available from the Coordinator on demand.

Table 1 External Advisory Board (EAB)

Italy	Francesco Puma	Secretary General	Po River Basin Authority
Germany	Simon Henneberg	Secretary General	River Basin Commission Weser
Spain	Jose Mari Sainz	Jefe de Planificación	Agencia Vasca del Agua (URA)

	de Galdeano	Hidrológica	
Portugal	Paula Sarmiento ¹		Alentejo Region's Water Management Authority

Kick-off meeting and steering committee meeting(s)

The **Kick-off Meeting** (and the first Steering Committee Meeting SCM) was held in Venice, 1st October 2010. The minutes from the meeting as well as the list of agreed actions are available in Annex 4. Besides the Consortium, a representative of the IWRM-net Consortium and Project Officer for the German case study, Melanie Bauer, attended the meeting.

Successively, a **Steering Committee Meeting** was held on 4 November 2010, in teleconference, to discuss the work in progress. The minutes from the meeting are included in the Annex 4.

Website and initial dissemination material

On 1st October 2010, the project **website** was activated (<http://www.feem-project.net/water2adapt/>). As foreseen in the proposal, in order to facilitate and promote the access of end-users, versions are available in English, Spanish, Italian, and German. The Portuguese version of the web site will be completed after the signature of the contract between FFCT-CENSE and the Foundation for Science and Technology (the Portuguese funding agency).

The project's **initial dissemination package** includes the brochures, several powerpoint presentations, and a project sheet. All these dissemination products are available from the project's web site and included in Annex 2.

The project was presented at the following **workshops and meetings**:

- International Workshop on "Resilience - Harnessing Science for Better Disaster Management", Venice, October 6-7, 2010. The workshop was organised by FEEM as a joint activity of the research network SOLACE (Social Costs of, and Resilience to, Natural Disasters) and the International Center for Climate Governance. The workshop was attended by 30 participants from **policy** (UNISDR, Regional Environmental Protection Agency of Calabria - Functional Centre, TWAS, World Bank), **academy** (Leuphana University of Lüneburg, Institut of Spatial Planning - TU Dortmund University, Alterra - WUR, , Politecnico di Milano, and Vienna University of Economics and Business, SORESMA), **research institutes** (FEEM, Helmholtz Centre for Environmental Research, IIASA) and **civil society** organisations (Wetlands International, IUCN, ACRA, Red Cross Climate Centre, Soresma,). All presentations are available from http://www.iccgov.org/workshop_better_disaster_management_papers.htm
- International Conference of the Alpine Convention "Water in the Alps", Venice, November 25-26, 2010.
- Scientific Coordination Project Kick off-Meeting, Brussels, November 30, 2010
- Final IWRM-net conference, Brussels, December 1-3, 2010
- UNISDR Partnership of Environment and Disaster Risk Reduction (PEDDR) Ecosystems, Livelihoods and Disaster Risk Reduction, Bonn, Germany, September 1-3, 2010.
- Science-Policy Interface under the Common Implementation Strategy (CIS-SPI) for the Water Framework Directive (WFD), organised by DG Research, Brussels, September 30, 2010.

¹ For institutional delays, she has not yet signed the agreement.

- European CIRCLE-2 Expert workshop on Uncertainties in Climate change Impacts, Vulnerability and Adaptation uncertainties, Stockholm, November 11-12, 2010.

For further information, a copy of the dissemination documents is available in Annex 2.

Work in progress in the Italian Case Study - River Basin Po

For the Italian case, in the course of the first reporting period the inception case study report and an initial dissemination packages were completed. The dissemination package contains a brochure characterising the Po River Basin and a poster.

Close contacts have been established with all key **stakeholders' organisations**. Several meetings were held in Parma, Bologna and Venice as indicated in Table 1. These initial meetings with the key stakeholders' organisations allowed refining the research plan and delineating the case study. Field visits will begin in February.

Table 2 List of Italian stakeholders already contacted

Autorità di Bacino	Dr. Francesco Puma (Direttore Generale)	Parma, 29 September 2010 <i>Preliminary meeting to set up collaboration strategy</i> Venice, 20 December 2010 <i>A day-long meeting to define the case studies' boundaries and assess the state-of-the-arts of the Po basin's water management plan, specifically in terms of drought management</i>
Comune di Parma	D.ssa Cristina Sassi (Assessore all'Ambiente)	Parma, 11 October 2010
IREN (Gestione Acque Municipali di Parma)	D.ssa Paola Manfrini (Responsabile Processi Qualità di Enia)	Parma, 29 September 2010
Regione Emilia-Romagna ²	D.ssa Rosanna Bissoli (Serv. Tutela e risanamento risorsa acqua)	Bologna, 14 October 2010

1.3: Overarching framework for resilience

The Overarching Framework lays down a a point of departure for assessing the economic and social effects of drought and water scarcity; defines 'resilience' and related terms and identify practical quantitative and qualitative indicators along which resilience will be described; and provides guidance for data collection, questionnaires and interviews to be conducted in the case studies.

For further information, a copy of the "OF for Resilience" is available in Annex 5.

1.4: Synthesis report for ISPRA

(This document).

² In the beginning of 2011, we will also meet with Land Reclamation and Irrigation Boards and the Civil Protection Department.

ANNEXES

Annex 1: Inception Report and Dissemination strategy

Annex 2: Dissemination material

International dissemination

Presentation .ppt for Water in the Alps Conference, Venice, 26 November 2010

Project sheet for IWRM-net Consortium

Leaflet FREEMAN-W2A

Presentation .ppt for Kick-off Meeting of Scientific Coordination Project, Brussels, November 30, 2010

Presentation .ppt for Final IWRM-net Conference, Brussels, December 1-3, 2010

Poster for Final IWRM-net Conference, Brussels, 1-3 December 2010

Italian case study

Leaflet Po

Poster of Italian case study

Report on Po River Basin and 2003/6-7 droughts

Annex 3: The Water2Adapt team

Annex 4: Minutes

Annex 5: Overarching framework for resilience

All these documents can also be found on the project's website. Dissemination material is available in the Publication section, whilst Inception Report and dissemination strategy, the Water2Adapt team, minutes, and the Overarching Framework are stored in the intranet section restricted to the Consortium members, funding agencies, and IWRM-net representatives.

Username: water2adapt

Password: IWRM-NET